

ZIGBEE THERMOSTATIC RADIATOR VALVE



Actuator



Features

Take control of your heating and save energy with the Zigbee thermostatic valve head. Combined with a compatible Zigbee Gateway 3.0, you can define intelligent programmes or scenes for greater comfort.

ENERGY SAVINGS



Programming* of heating times or creation of automated scenarios according to lifestyle habits to reduce energy consumption.

KEY LOCK



Prevents unauthorised or accidental or accidental temperature adjustments.

INSTALLATION WITHOUT CONSTRUCTION WORKS



Compatible with most radiators and easy to install.

UPDATE OVER THE AIR (OTA)



The Zigbee thermostatic valve head is quick to update thanks to the OTA feature. Updates can be made via a compatible home automation control unit.

Technical specifications

Power supply: 2 x 1,5 V AA/LR6

Threaded connectors: M30 x 1.5 mm

Control Range: 8–28°C

Adaptors : RA, RAV, RAVL

RF Protocol: Zigbee 2,4 GHz

RF power max: +8 dBm

Device ID Type : Thermostat (0x0301)

Signal Range : 30m indoor

Protection rating: IP20

Environment / Working temperature: 0–50°C

Dimension: 62 x 68 x 83 mm

Weight: : 230 g (batteries inclues)

Commercial warranty: 2 years

*Requires a Zigbee compatible home automation system

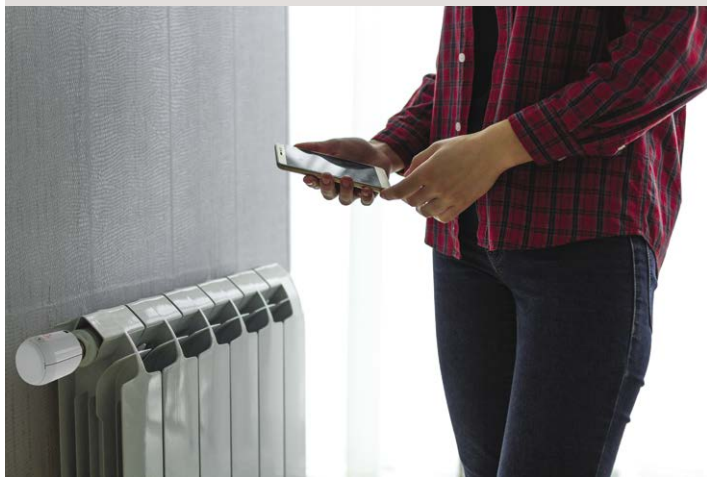


The Zigbee thermostatic valve head only works with a Zigbee-compatible home automation control unit (Gateway) (automatic or remote control).

List of compatible home automation gateways available on www.nodon.fr/en



Renovation



Automatic or remote control of a hydraulic radiator

Comfort



Automatic shut-off of the heating if the window is open

Energy savings

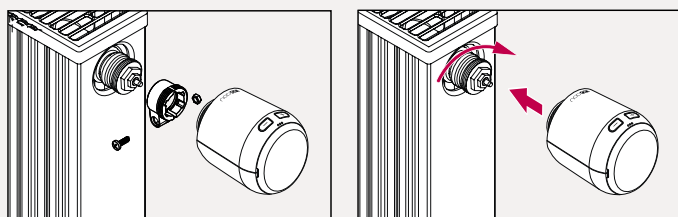


Automatic optimisation of heating management room by room

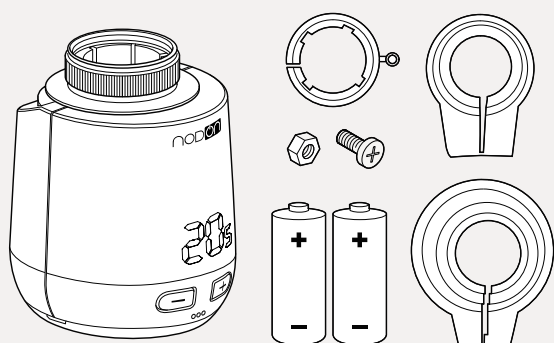


Heating control based on presence or absence in a room

Installations examples



Content



Dimension



Reference

TRV-4-1-00
EAN: 3700313926178